

DO NOT USE  
WHERE FLAMMABLE  
VAPORS ARE PRESENT.



MOTOR CAN  
SPARK EXPLOSION!

WARNING! EXPLOSION HAZARD. DO NOT PUMP FLAMMABLE  
LIQUID SUCH AS GASOLINE, ALCOHOL, SOLVENTS, etc.



**NORMAN FILTER COMPANY L.L.C.**

**9850 SOUTH INDUSTRIAL DRIVE**

**BRIDGEVIEW, ILLINOIS 60455**

**PHONE: 708-233-5521**

**FAX: 708-430-5961**

PSM04-12, REV.0, 04/2007



**MIGHTY MIGHT  
PORTABLE FILTER UNIT**

**OPERATION AND MAINTENANCE MANUAL**



PSM04-12, REV.0, 04/2007

**NORMAN FILTER COMPANY L.L.C.  
MIGHTY MIGHT  
PORTABLE FILTER UNIT**

**APPLICATIONS**

- Transferring new fluids from drums or storage tanks to system reservoir.
- Complimenting existing system filtration in a preventative maintenance program.
- Removing water from a system.
- Filtering new fluid before putting into service.
- For use with fluids such as hydraulic, gear and lube oil, water soluble fluids and coolants. Call factory regarding compatibility.

The Norman Mighty Might is the ideal way to pre-filter and transfer fluids from one container to another or to re-circulate fluid (bypass filtration) in a reservoir to remove particulate and water contaminants in existing systems.

New fluid should always be filtered before putting into use. New fluid is not necessarily clean fluid, on average there are 7 grams of contaminants in 100 gallons of new barrelled oil. Most new fluids are unfit for use due to high initial contamination levels. Contamination, both particulate and water, may be accidently added to a new fluid during processing, mixing, handling and storage.

The Norman Mighty Might can remove water by the use of an aqua absorbing filter element. The Norman aqua absorbing elements remove up to 7.4 ozs. of water from petroleum based fluids, while filtering out particles down to 3 micron.

The Norman Mighty Might has a filter built into the pump which protects the pump from all visible contaminants prior to filtering. When a flow decrease is observed, remove and clean filter.

**OPERATING  
INSTRUCTIONS**

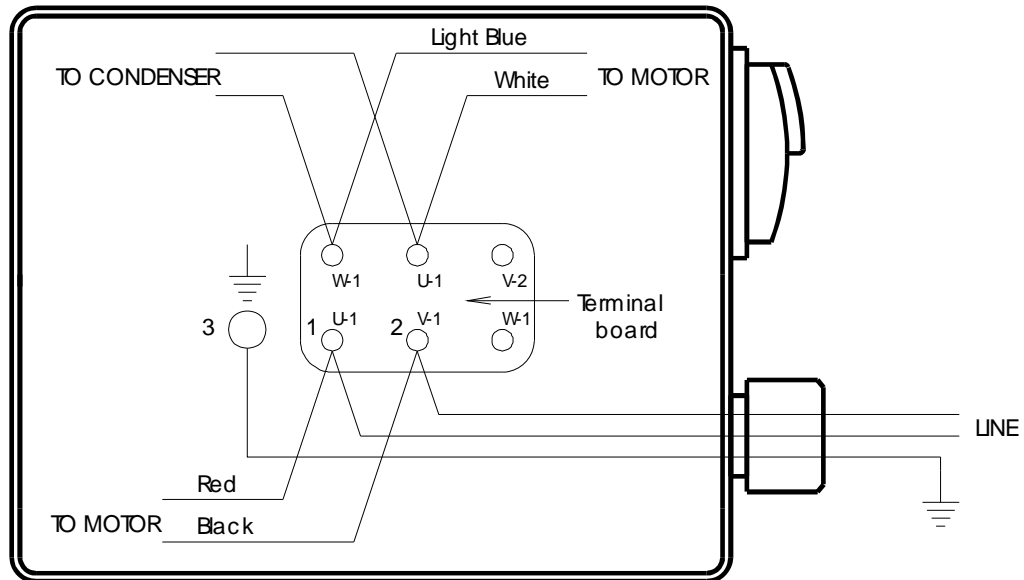
- 1) Insert the inlet wand assembly into the supply fluid drum/reservoir. The inlet wand is connected to the pump inlet. If needed the wands can be screwed together to lengthen the suction side of the pump.
- 2) Insert the outlet wand assembly into the transferring drum/reservoir, locate the inlet wand away from the outlet wand to prevent a direct flow path.
- 3) Verify that the ON/OFF switch is OFF and plug the cord into a 115VAC 10A grounded outlet (3wire).
- 4) Turn switch to ON position and check outlet wand to verify for oil flow. Allow approximately 10 seconds for filter to fill with oil on initial start up.
- 5) The condition of the filter element should be monitored by the gauge located on the filter head, when the pressure exceeds 20 psi the filter element must be changed.
- 6) The filter located in the pump housing should be periodically checked and cleaned if needed.

**BILL OF MATERIAL**

ITEM	QTY	NORMAN PART#	DESCRIPTION
1	1	41250550	FRAME PER DRW. B-10-7736
2	1	41250217	SINGLE PHASE MOTOR .5HP 110/60HZ 3400 RPM W/6 GPM VANE PUMP
3	2	26057608	FILTER HEAD WITH 25 PSI BY-PASS
3A	1	SEE BELOW	FILTER ELEMENT
4	2	26054457	2" DIAMETER PRESSURE GAUGE
5	2	SEE PARTS	HOSE ASSEMBLIES
	12"	41252072	3/4" VARDEX HOSE
	4	41250292	FEMALE SWIVEL HOSE TO HOSE BARB
	4	41250291	CRIMP SLEEVE
6	1	SEE PARTS	WAND ASSEMBLY
	1	41250563	STRAIGHT CUT WAND
	1	41250564	45 DEG. CUT WAND
	1	41250295	FEMALE HOSE TO MALE PIPE
	1	41250294	MALE HOSE TO MALE PIPE
	1	41250293	HOSE COUPLING RUBBER WASHER
7	1	SEE PARTS	WAND ASSEMBLY
8	4	41250348	WAND CLIPS
9	1	41250346	CORD GRIP (BLACK)
10	1	41250230	HAND GRIP
11	2	41250364	MALE HOSE TO MALE PIPE
12	1	41250362	1" x 3/4" PIPE REDUCER
13	1	41250363	1" x 3/4" PIPE ELBOW
14	1	41250361	3/4" x 3/4" MALE TO FEMALE PIPE ELBOW
15	1	ON REQUEST	MIGHTY MIGHT ADHESIVE NAME PLATE
16	1	ON REQUEST	WARNING LABEL
17	1	41250298	3/4" PIPE NIPPLE
18	1	41250391	STEEL PLUG

**FILTER ELEMENT REPLACEMENT NUMBERS**

MODEL NO	NORMAN PART NO	CELLULOSE/WATER ABSORBING/S.S. MESH MEDIAS MICRON RATING (NOMINAL)
303	26013365	3 MICRON CELLULOSE
310	26013666	10 MICRON CELLULOSE
310AQ	26013668	10 MICRON / WATER ABSORBING
325	26013667	25 MICRON CELLULOSE
3100	26054494	100 MICRON S.S. MESH
403	26013669	3 MICRON CELLULOSE
403AQ	26054970	3 MICRON / WATER ABSORBING
410	26013670	10 MICRON CELLULOSE
425	26013671	25 MICRON CELLULOSE
4100	26054973	100 MICRON S.S. MESH
		MICROGLASS MEDIA (ABSOLUTE RATING)
303M	26054395	3 MICRON ABSOLUTE
310M	26054479	10 MICRON ABSOLUTE
325M	26054969	25 MICRON ABSOLUTE
410M	26054971	10 MICRON ABSOLUTE
425M	26054972	25 MICRON ABSOLUTE



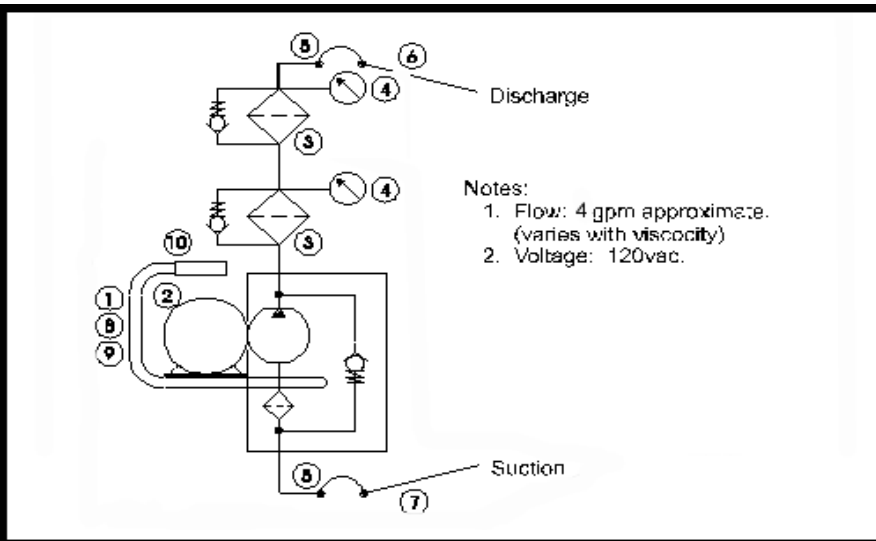
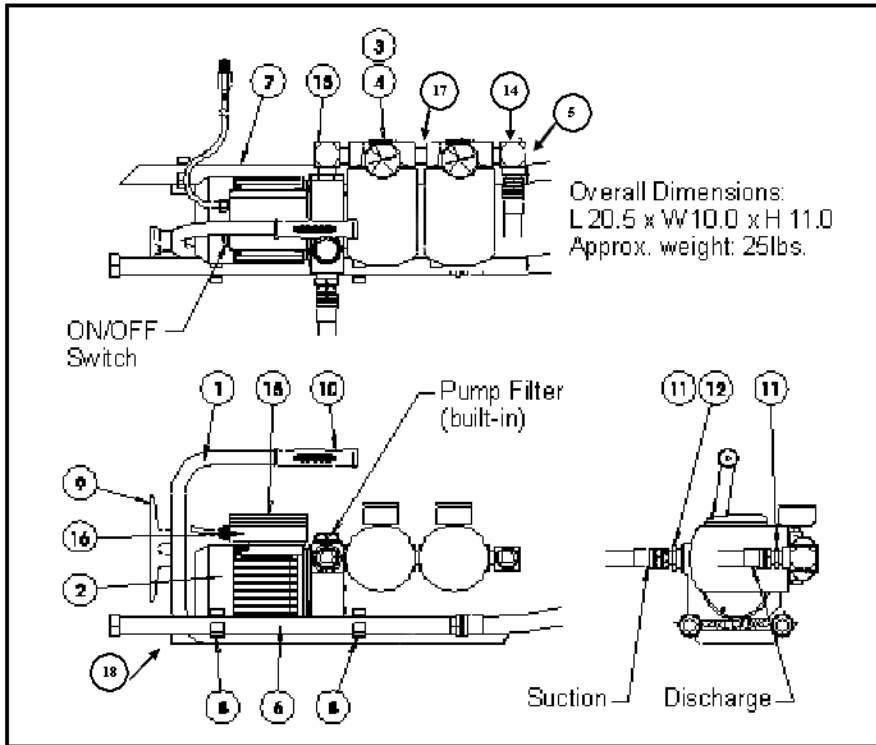
1. Connect red wire to U-1.
2. Connect black wire to V-1.
3. Connect ground wire to the ground screw on the motor body.

NOTE DIAGRAM NOT TO SCALE

THIS DOCUMENT FOR REFERENCE ONLY. ARTICLES DESCRIBED HEREIN ARE EITHER PATENTED OR DIRECTLY RELATED TO ARTICLES WHICH ARE PATENTED OR PROPRIETARY TO NORMAN FILTER COMPANY, LLC. THIS DOCUMENT AND SUCH INFORMATION IS NOT TO BE REPRODUCED, TRANSMITTED, DISCLOSED OR USED OTHERWISE IN WHOLE OR IN PART WITHOUT THE WRITTEN AUTHORIZATION OF NORMAN FILTER COMPANY, LLC, 9850 SOUTH INDUSTRIAL DRIVE, BRIDGEVIEW, ILLINOIS 60455

APPROVAL	DATE	NORMAN FILTER COMPANY, LLC	
CHECKED BY:		9850 SOUTH INDUSTRIAL DRIVE • BRIDGEVIEW, ILLINOIS 60455 PHONE (708) 233-5521 • FAX (708) 430-5961	
APPROVED BY:		SCALE: NONE	DRAWN BY: RAM
CUSTOMER APPROVAL:		DATE: 03-30-98	REVISED:
		CODE IDENT NO. 59165	
		DRAWING NUMBER A-2-7771	
		<b>MIGHTY MIGHT ELECTRICAL DIAGRAM</b>	

**SPARE PARTS BREAKDOWN &  
HYDRAULIC SCHEMATIC (MIGHTY MIGHT)**



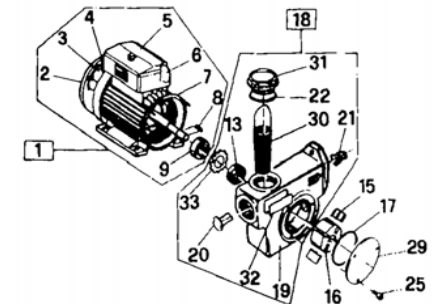
PSM04-12, REV.0, 04/2007

**TROUBLE SHOOTING**

PROBLEM	CAUSE	SOLUTION
Unit does not start?	ON/OFF switch.	Turn switch ON, replace if defective.
	Defective condenser.	Replace condenser. (located in switch housing)
	No electrical power.	Plug in unit.
	Defective motor.	Replace motor.
No oil Flow?	Pump filter. (built in)	Check pump filter for contamination block.
Erratic pump noise?	Defective pump or suction leak.	Replace pump/motor. (item 2) Check hose for loose connections.
	Gauge reads 20 psi or higher.	Element dirty. Oil is extremely cold or viscous.

**SPARE PARTS BREAKDOWN (pump/motor)**

Item	Description	Material
1	Single phase motor 0.5HP 110/60Hz	
2	Impeller cover	Plastic
3	Impeller	Plastic
4	Switch	Plastic
5	Terminal cover	Plastic
6	Condenser	
7	Stator	
8	Shaft key	Steel
9	Ball bearing 6201-2ZR	
13	Seal BABSL 10x26x7	Viton
15	Vane	Delrin
16	Impeller	Steel
17	O-Ring seal 3206	NBR 70
18	Pump casing kit	
19	Pump casing	G20 UNI 5007
20	Valve by-pass	Derlin
21	Spring by-pass	Steel



Item	Description	Material
22	O-ring seal 3118	NBR 70
25	Screw m5x8 UNI 5931	Steel 8.8
29	Front cover	Galvanized steel
30	Filter	AISI 304
31	Filter plug	Galvanized steel
32	Filter name plate	PVC
33	Seeger	Steel

PSM04-12, REV.0, 04/2007