

**NOTES:**

1. BILL OF MATERIALS: PER DMF01-23
2. HEAT TREAT 17-4 S.S. TO CONDITION H1150 BEFORE MACHINING
3. STAINLESS STEEL WOVEN MESH ELEMENTS ARE BUBBLE POINT TESTED PER NFC DENO2-12
4. CLEAN PARTS PRIOR TO ASSEMBLY PER OPMF-500.
5. ASSEMBLY: PER DETAILED DRAWING ON SHEET 2. TORQUE PER REQUIREMENTS ON SHEET 2.
6. LUBRICATION: HALOCARBON 28I UNLESS OTHERWISE NOTED ON JOB INSTRUCTIONS.
7. LABELING: PER OPMF-126
8. SINTERED MEDIA DATA REFERENCED TO MOTT LITERATURE; PARTICLE EFFICIENCY 99.9% OR HIGHER

REVISIONS			
DRAWING REV.	DESCRIPTION	DATE	APPROVED
E	PER ECO 2021: CALLED OUT HEAT TREATMENT PROCESS FOR 17-4 S.S.	3/29/2019	JB
F	ECO 2347; 12 µm OPTION ADDED	9/30/19	JB

**TABLE 1 - PORT CODE AND DESIGN PRESSURE**

PORT CODE	INLET AND OUTLET PORT	MAX DESIGN PRESSURE
11	AS5202-4	9600
11J	SAE J1926-1:7/16-20	9600
22	1/8-27 NPT	9600
23	1/4-18 NPT	9600
250	1/4" MP	20000
375	3/8" MP	20000
562	9/16" MP	20000

**TABLE 2 - MATERIAL CODE**

MATERIAL CODE	MATERIAL	SPECIFICATION	PORT CODES
*T	316/316L S.S.	AMS-QQ-S-763	11,11J,22,23,250,375,562
G	17-4 S.S.	ASTM A 564/564M OR AMS 5643	11,11J,22,23,250,375,562
*M	MONEL 405	ASTM B164	11,11J,22,23,250,375,562

\*MONEL 405 AND 316/316L S.S. PORT CODES 250, 375, 562 RATED FOR 10000 psi ONLY

**TABLE 4 - COLLAPSE RATING**

RATING CODE	RATING
V	4500 psi WIRE MESH
E	4500 psi RMF
A	300 psi GLASS FIBER
C	3250 psi GLASS FIBER
F	2000 psi 316 SINTERED

**TABLE 5 - O-RING MATERIAL**

O-RING CODE	MATERIAL
M	TEFLON
M1	TEFLON per AMS 3678C-1-B
E	EPR
E1	V138-95
S	SILICONE
L	BUNA, 70 DUROMETER
K	BUNA, 90 DUROMETER
HNBR	HNBR
H	4079 KALREZ
N	VITON
MN	TEFLON COATED VITON

**TABLE 3 - MICRON RATING**

ELEMENT MEDIA	ELEMENT '3A' CODE	MICRON '3B' CODE	RATING	
			NOM	ABS
STAINLESS STEEL WIRE MESH	G	2X	2	10
		02	2	12
		5	5	18
		10	10	25
		20	20	40
		40	40	75
		75	75	100
		100	100	--
NICKEL WIRE MESH	W	10	10	25
		75	75	150
		100	100	200
RMF*	R	3R	-	3
		5R	-	5
		10R	-	10
		20R	-	20
		100R	-	100
GLASS FIBER	F	3F	-	3
		5F	-	5
		10F	-	10
		25F	-	25

ELEMENT MEDIA	ELEMENT '3A' CODE	'3B' CODE	RATING	
			GAS ABS	LIQUID ABS
SINTERED	P	0.2	0.2	1.4
		0.5	0.3	2.2
		1	0.7	3.3
		2	2	9
		5	5	13
		10	13	20
SINTERED TIN/BRONZE	B	10	10	

\*Initial efficiency for RMF elements is greater than 98% for all particle sizes

**ASSEMBLY:**

47    -

**EXAMPLE:**

47 11 G G - 2X V N

**REPLACEMENT ELEMENT:**

4 6 3A 3B 4 5  
 11  G -  2X  V  N

TABLE 6 - ELEMENT SIZE CODE FOR PORT CODE		ELEMENT CODE
11, 22, 23		12
250, 375, 562		11

UNLESS OTHERWISE SPECIFIED DIMENSIONS ARE IN INCHES

TOLERANCES ON:  
 2 PLACE DECIMAL: .XX +/-0.01  
 3 PLACE DECIMAL: .XXX +/-0.005  
 ANGULAR: +/- 0.5°

-----  
 PART TO BE FREE OF BURRS  
 REMOVE SHARP EDGES (FILLET 0.005" - 0.020") MEASUREMENT NOT REQUIRED  
 SURFACE FINISH 125 Ra UNLESS NOTED, VISUAL INSPECTION ONLY REQUIRED  
 IF PART REVISION IS NOT SPECIFIED, PART REV. MATCHES DRAWING REV.  
 NFC WORKMANSHIP STANDARD DMF01-24 APPLIES



**TITLE:** 4700 SERIES ASSEMBLY

**PART NUMBER:** TABULATED

**PART REV:** F

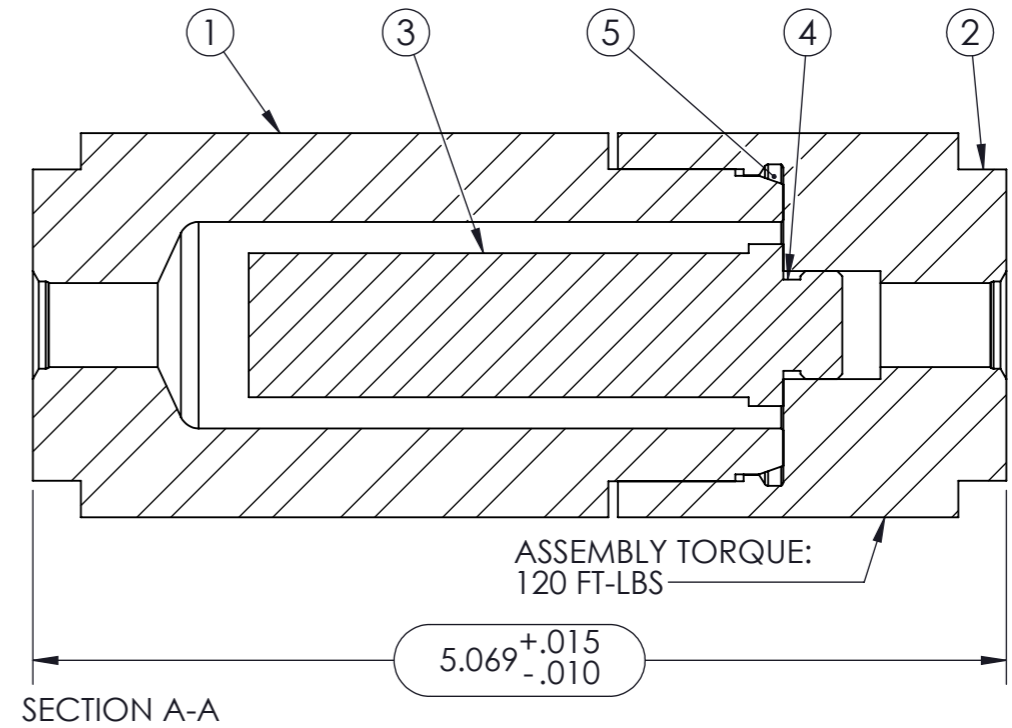
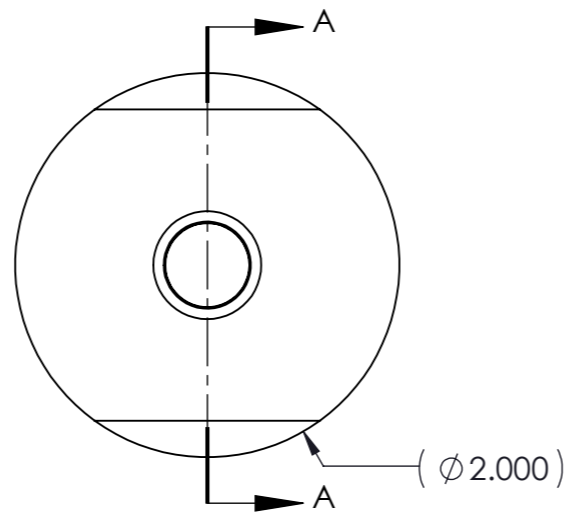
**DWG NO.:** 4700

**CAGE CODE:** 59165

**SIZE:** A3

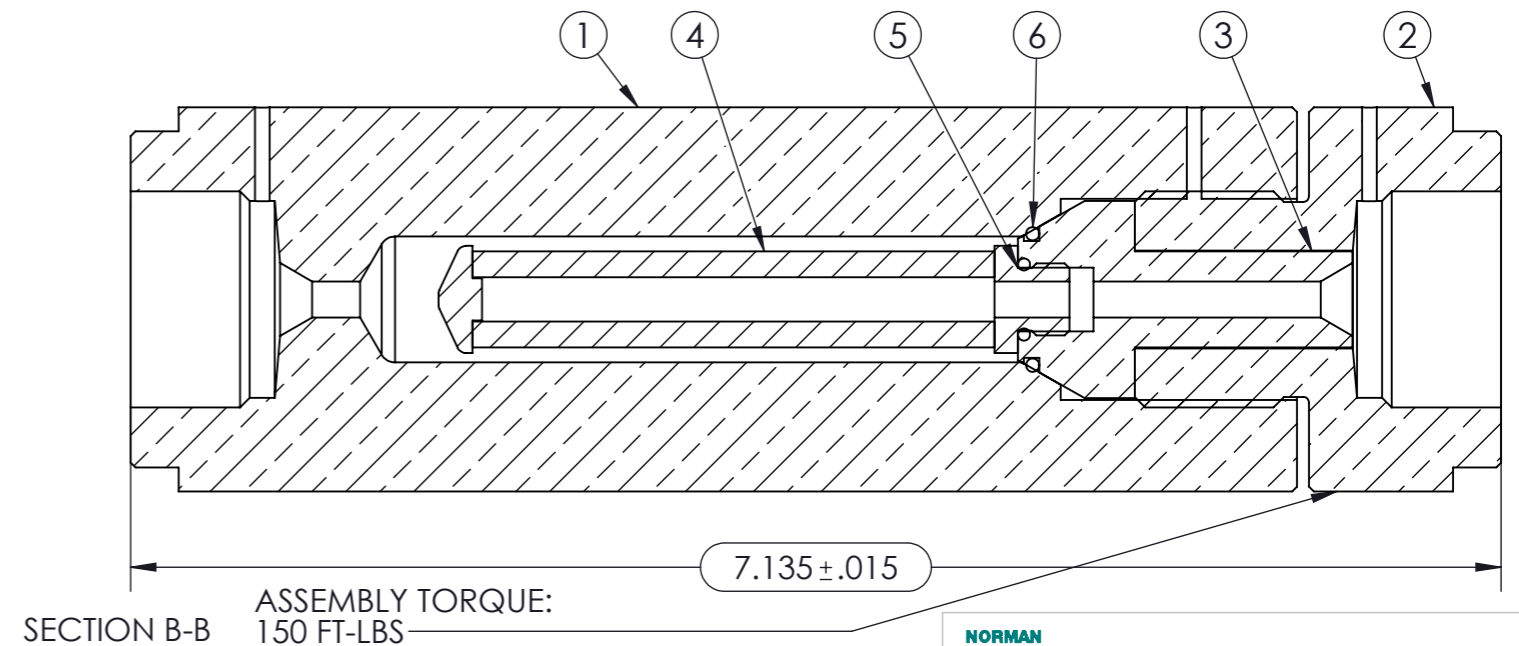
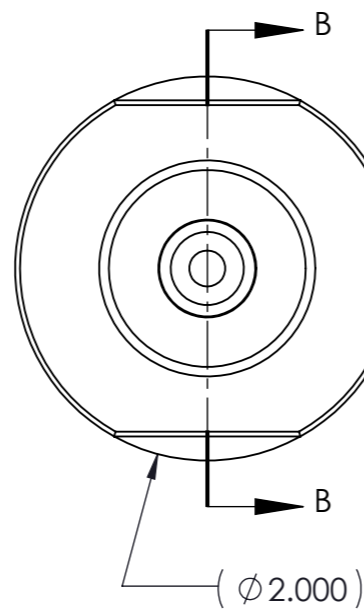
PORT SIZES: 11, 11J, 22, 23

ITEM	DESCRIPTION
1	FILTER CASE
2	FILTER PLUG
3	412 ELEMENT
4	ELEMENT O-RING
5	HOUSING O-RING



PORT SIZES: 250, 375, 562

ITEM	DESCRIPTION
1	FILTER CASE
2	FILTER PLUG
3	FILTER SLEEVE
4	411 ELEMENT
5	ELEMENT O-RING
6	HOUSING O-RING



UNLESS OTHERWISE SPECIFIED  
DIMENSIONS ARE IN INCHES

TOLERANCES ON:  
2 PLACE DECIMAL: .XX +/-0.01  
3 PLACE DECIMAL: .XXX +/-0.005  
ANGULAR: +/- 0.5°

-----  
PART TO BE FREE OF BURRS  
REMOVE SHARP EDGES (FILLET 0.005" - 0.020") MEASUREMENT NOT REQUIRED  
SURFACE FINISH 125 Ra UNLESS NOTED, VISUAL INSPECTION ONLY REQUIRED  
IF PART REVISION IS NOT SPECIFIED, PART REV. MATCHES DRAWING REV.  
NFC WORKMANSHIP STANDARD DMF01-24 APPLIES

TITLE: 4700 SERIES ASSEMBLY		PART REV: F	
PART NUMBER: TABULATED		CAGE CODE 59165	SIZE A3
DWG NO. 4700		SHEET 2 OF 2	

DO NOT SCALE DRAWING

SCALE:1:1